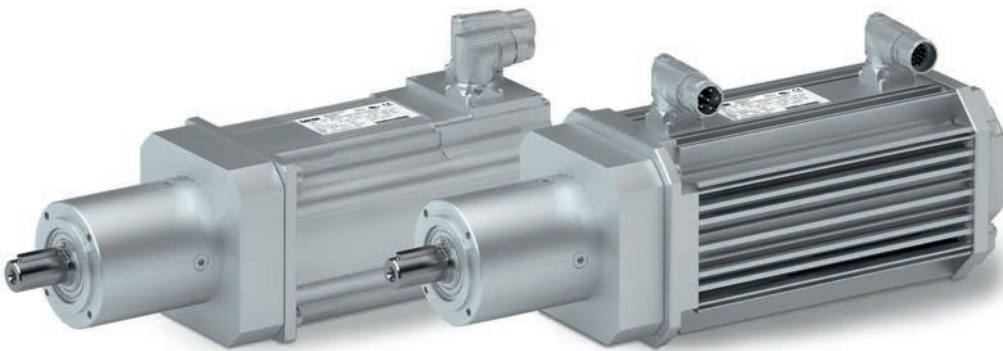


Precise application.



The g700 planetary gearbox is the ideal solution for demanding, dynamic tasks. With its high reliability, long service life and outstanding scalability, it provides everything you need to manage demanding machine tasks.

Highlights

- High potential input speeds
Max. input speed 18,000 rpm
- Wide ratio spectrum $i=3$ to 510 in 24 ratios
- Wide range of rated torques 5 to 800 Nm in five sizes
- Lifetime lubrication for any mounting position

Technical data

Gearbox size		g700-P20	g700-P44	g700-P120	g700-P260	g700-P800
Rated torque	[Nm]	20	44	120	260	800
Ratio range		3 - 510	3 - 510	3 - 510	3 - 510	3 - 65
Solid shaft dimensions	[mm]	10 x 26	14 x 35	20 x 40	24 x 55	40 x 87
Flange dimensions	[mm]	40	60	90	115	140

g700-P planetary geared motors

Gearbox

When used in conjunction with synchronous and asynchronous servo motors, our planetary gearboxes form a compact, powerful drive unit. Numerous options at the input and output ends ensure that the drive can be easily and precisely adjusted to suit your application.

Designs

With synchronous servo motors and asynchronous servo motors Power range: 0.25 to 20.3 kW

Tailored to your individual ambient conditions

Gearbox with	Servo motors
Enclosure	
EN 60529	IP54 / IP65
Approvals	
	cURus, GOST-R, CCC and UkrSepro
Climatic conditions	
Storage temperature	-30 to 60 °C
Operating temperature	-20 to 40 °C
Surface and corrosion protection	
OKS-G (primed)	1K primer
OKS-S (small)	2K PUR top coat
OKS-M (medium)	1K primer, 2K PUR top coat
OKS-L (large)	2K EP primer, 2K PUR top coat